

# Product data sheet

## Boxer EFS 4-6



Integrated door closer for 1-leaf doors with a leaf width of up to 1400 mm with electric free swing

### AREAS OF APPLICATION

- Fire and smoke protection doors, proof of suitability for the door required
- Right and left single-action doors
- Single-action doors up to 1400 mm leaf width and 180 kg leaf weight
- Integrated installation
- Hold-open systems with integrated hold-open device with free swing
- Barrier-free access in accordance with DIN 18040

**PRODUCT FEATURES**

- Closing force with variable adjustment of EN 4-6
- Can be used for right and left hand doors without conversion
- Door closer is embedded in the door leaf and frame and fulfils the highest design demands
- Closing sequence control holds the active leaf in the waiting position until the passive leaf is closed
- Free swing function makes it possible to pass through the door with little physical force required
- Comfort hold-open function stops the door at the end of the free swing area
- Smoke switch control unit can be connected, whose signal makes the door close automatically in the event of a fire
- Integrated back check, slows down doors that are thrown open forcefully
- Hydraulic latching action which accelerates the door shortly before the closed position
- Closing speed can be individually adjusted
- All functions can be adjusted in the installed state

**TECHNICAL DATA**

Productname	Boxer EFS 4-6
-------------	---------------

**PART****CLOSER BODY BOXER EFS 4-6**

Main body for integrated door closer size EN 4-6 with electric free swing function incl. free swing lever with comfort hold-open function



Name	Description	Ident-No.	Colour	Closing force	Dimensions
GEZE Boxer EFS 4-6	Size EN 4-6, with electric free swing function incl. free swing lever with comfort hold-open function / Leaf width up to 1400 mm, door leaf thickness min. 50 mm	153559	silver-coloured	EN 4 - 6	332 x 40 x 54 mm

# Boxer EFS 4-6



## GUIDE RAIL BOXER EFS 20.7 MM

With an overall height of 20.7 mm for Boxer EFS 4-6



Name	Description	Ident-No.	Colour	Dimensions	Hold-open device
Guide rail Boxer EFS 20.7 mm	Overall height 20.7 mm, for Boxer EFS 4-6	153571	silver-coloured	480 x 31 x 20.7 mm	Electrically, for free-swing function

## GUIDE RAIL BOXER EFS 12 MM

With an overall height of 12 mm for Boxer EFS 4-6

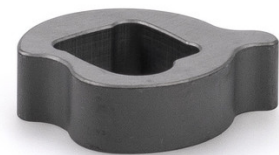


Name	Description	Ident-No.	Colour	Dimensions	Hold-open device
Guide rail Boxer EFS 12 mm	Overall height 12 mm, for Boxer EFS 4-6	153560	silver-coloured	480 x 20 x 12 mm	Electrically, for free-swing function

## ACCESSORY

### SPINDLE EXTENSION BOXER EFS 4-6

for comfort latching lever



Name	Description	Ident-No.	Spindle extension
Spindle extension Boxer EFS 4-6	for comfort latching lever	153574	8 mm
Spindle extension Boxer EFS 4-6	for comfort latching lever	153573	4 mm

**SET RSZ 6 ECWIRE**

Smoke switch and power supply for all GEZE hold-open devices



Name	Description	Ident-No.	Colour
Set RSZ 6 ECwire	Integrated smoke switch control unit ECwire for straightforward wiring using 2-wire technology, including 2 x ceiling-mounted smoke detectors type GC 162 (white)	154980	acc. to RAL
Set RSZ 6 ECwire	Integrated smoke switch control unit ECwire for straightforward wiring using 2-wire technology, including 2 x ceiling-mounted smoke detectors type GC 162 (white)	154976	silver-coloured
Set RSZ 6 ECwire	Integrated smoke switch control unit ECwire for straightforward wiring using 2-wire technology, including 2 x ceiling-mounted smoke detectors type GC 162 (white)	154991	stainless steel optic
Set RSZ 6 ECwire	Integrated smoke switch control unit ECwire for straightforward wiring using 2-wire technology, including 2 x ceiling-mounted smoke detectors type GC 162 (white)	154979	white RAL 9016

**GC 152**

Smoke detector for GEZE hold-open systems



Name	Description	Ident-No.	Colour	Type of installation
GEZE smoke detector GC 152	Complete with base, 24 V DC, 20 mA, tested in accordance with EN54-7, with general approval for use with all GEZE hold-open systems FA GC 150, integrated line monitoring, conform with DIN EN 14637	139850	white	Ceiling installation

**GC 153**

Thermal detector for GEZE hold-open systems



Name	Description	Ident-No.	Colour	Type of installation
GEZE thermal detector GC 153	Complete with base, 24 V DC, 20 mA, tested in accordance with EN54-5, with general approval for use with all GEZE hold-open systems FA GC 150, integrated line monitoring, conform with DIN EN 14637	139881	white	Ceiling installation

# Boxer EFS 4-6



## SURFACE-MOUNTED BOX, SINGLE

Matching the AS 500 switch range



Name	Description	Ident-No.	Colour
Surface-mounted box, single	Matching the AS 500 switch range	120503	alpine white

## AS 500

Manual trigger switch for the manual release of electrically controlled hold-open devices



Name	Description	Ident-No.	Colour	Dimensions	Operating voltage
AS 500 manual trigger switch	for the manual release of electrically controlled hold-open devices including terminating resistor for line monitoring	116266	alpine white/red	80 x 80 x 9 mm	24 V DC
AS 500 manual trigger switch, glass	for the manual release of electrically controlled hold-open devices including terminating resistor for line monitoring, glass pane and 5 interchangeable labels	120880	alpine white/red	80 x 80 x 21 mm	24 V DC

## RSZ 7

Extendable smoke switch control unit for all GEZE hold-open devices



Name	Description	Ident-No.	Colour	Length
RSZ 7 smoke switch control unit	Smoke switch control unit for all GEZE hold-open devices	185231	acc. to RAL	346 mm
RSZ 7 smoke switch control unit	Smoke switch control unit for all GEZE hold-open devices	184196	stainless steel optic	346 mm
RSZ 7 smoke switch control unit	Smoke switch control unit for all GEZE hold-open devices	181025	silver-coloured	346 mm
RSZ 7 smoke switch control unit	Smoke switch control unit for all GEZE hold-open devices	184195	white RAL 9016	346 mm