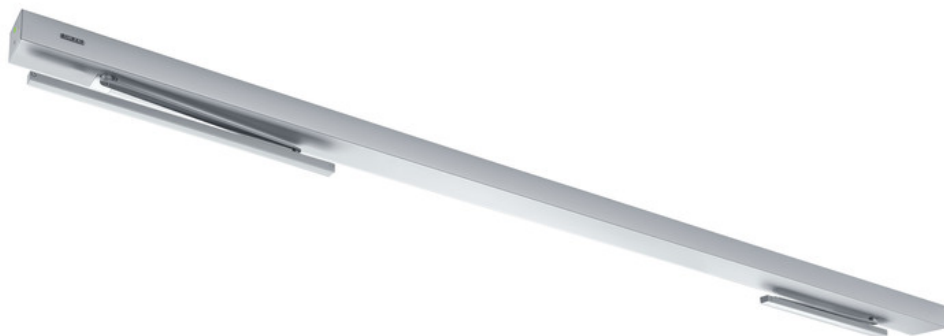


Product data sheet

Powerturn IS/TS *



Semi-automatic system with swing door drive on active leaf
and door closer on passive leaf



AREAS OF APPLICATION

- Right and left double leaf single-action doors
- Single-action doors up to 3200 mm hinge clearance with link arm installation
- Single-action doors up to 3000 mm hinge clearance with roller guide rail installation
- Minimum hinge clearance 1270 mm, minimum passive leaf width 470 mm (depending on installation type)
- Interior and exterior doors with high access frequency
- Symmetrical and asymmetrical division of door possible
- Transom installation hinge and opposite hinge side

PRODUCT FEATURES

- Smart swing function for easy manual door opening
- Closing force of EN4-7 with variable adjustment
- Opening and closing speed can be adapted individually on the active leaf
- Mechanical latching action which accelerates the door shortly before the closed position
- Mechanical closing sequence control holds the active leaf in the waiting position until the passive leaf is closed
- Low-energy function opens the door with reduced speed, fulfilling the highest safety requirements
- Obstacle detection detects an object through contact and stops the opening or closing process
- Automatic reversing detects an obstacle and returns to the opening or closing position
- Push & Go function triggers the automatic drive components following manual door handle activation
- System available for use with roller guide rail or link arm
- Optional radio reception board for wireless activation by radio transmitter

TECHNICAL DATA

Productname	Powerturn IS/TS *
Height	70 mm
Depth	130 mm
Leaf weight (max.) 1-leaf	600 kg
Hinge clearance (min.-max.) 2-leaf, link arm	1270 mm - 3200 mm
Hinge clearance (min.-max.) 2-leaf, roller guide rail	1380 mm - 3000 mm
Leaf width (min.-max.)	470 mm - 1600 mm
Reveal depth (max.)	160 mm
Drive type	Electromechanical
Spring pre-load	EN1 - EN7
DIN left	Yes



DIN right	Yes
Transom installation opposite hinge side with link arm	Yes
Transom installation hinge side with roller guide rail	Yes
Mechanical latching action	Yes
Mechanical closing sequence control	Yes
Disconnection from mains	Main switch in the drive
Activation delay (max.)	10 s
Operating voltage	230 V
Power rating	200 W
Power supply for external consumers (24 V DC)	1200 mA
Service temperature	-15 - 50 °C
IP rating	IP30
Mode of operation	Automatic, Night, Permanently open, Shop closing, Off
Type of function	Fully automatic
Automatic function	Yes
Low-energy function	Yes
function smart swing	Yes
Key function	Yes
Vestibule function	Yes
Obstacle detection	Yes
Automatic reversing	Yes
Push & Go	adjustable
Operation	GEZEconnects (PC + Bluetooth), ST 220 service terminal, Programme switch DPS
Parameter setting	GEZEconnects (PC + Bluetooth), ST 220 service terminal
Standard conformity	DIN 18650, EN 1158, EN 16005
Smoke switch integrated	No

* The products designated above may vary in form, type, characteristics, function, or availability depending on the country. Please get in touch with your GEZE contact person if you have any questions.