

# Product data sheet

# **TZ 320 BS AP – EN**

# **13637 \***



Door control unit for controlling escape route doors with illuminated emergency exit sign and key switch



### AREAS OF APPLICATION

- EN 13637-compliant protection of an emergency exit against unauthorised access
- Can be used on single and double leaf doors
- Connectivity via bus enables e.g. interlocking door system control, forwarding of alarms, connection to building management system
- Can be combined with motor locks and swing door drives
- Realisation of a bidirectional emergency exit
- Surface-mounted installation allows subsequent installation on the door with little effort

### PRODUCT FEATURES

- Flat impact cover enables fast and safe activation of the illuminated emergency push button in panic situations
- Coloured connectors facilitate electrical connection
- Three freely configurable inputs and two freely configurable outputs offer numerous possibilities for additional components
- Number of inputs and outputs can be extended with the IO 420 interface module
- Illuminated emergency exit sign improves visibility
- Integrated key switch enables authorised passing through the emergency exit

### TECHNICAL DATA

Productname	TZ 320 BS AP – EN 13637 *
Width	77 mm
Height	197 mm
Depth	88 mm
Type of installation	Surface-mounted installation
Service temperature	-10 – 55 °C
IP rating	IP30
Operating voltage	24 V DC
Current consumption	130 mA
Illuminated	Yes
Supply voltage	24 V DC
Power supply for external consumers (24 V DC)	950 mA
Contact rating	30 V / 1 A
Sabotage contact	Yes
Number of inputs	3 Stk.
Number of outputs	2 Stk.
Emergency push button	Yes

Visual display	yes
Volume	75 db
Type of cylinder	Euro profile half cylinder
With ribbon cable	Yes
Parameter setting	ST 220 service terminal
Conforms to the EltVTR (guidelines for electronic locking systems)	Yes, only in connection with additional emergency exit sign in accordance with EltVTR (guidelines for electronic locking systems)
Conforms to EN 13637	Yes

**VARIANTS / ORDER INFO**

Designation	Description	Ident-No.	Colour	Dimensions	Operating voltage
TZ 320 BS door control unit, surface-mounted, EN 13637 *	Consisting of: / Control unit with emergency push button, / Key switch with Euro profile half cylinder / Emergency exit sign illuminated / Operating voltage 24 V DC	193543	green	77 x 197 x 88 mm	24 V DC
TZ 320 BS door control unit, surface-mounted, EN 13637 *	Consisting of: / Control unit with emergency push button, / Key switch with Euro profile half cylinder / Emergency exit sign illuminated / Operating voltage 24 V DC	193544	white aluminium	77 x 197 x 88 mm	24 V DC

**ACCESSORIES****POWER SUPPLY NT 6.25 A-24 V HS \***

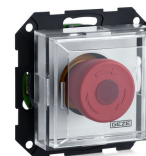
24 V power supply for top hat rail mounting



Designation	Description	Ident-No.	Colour	Dimensions	Operating voltage
Power supply NT 6.25 A-24 V HS *	Output voltage 24 V DC / W x H x D: 72 x 95 x 66.5 mm / Installation on top hat rail, 4 division units	192113	grey	72 x 95 x 66.5 mm	230 V DC +/- 10%

**NOT 320 UP \***

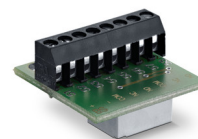
Emergency exit system emergency push button for mains voltage shut-off in the case of an emergency or during maintenance work, surface-mounted installation



Designation	Description	Ident-No.	Operating voltage	Type of installation	Number of relays
NOT 320 UP emergency push button *	Without frame / Impact cover made of transparent plastic / Impact cover dimensions 55 x 55 mm / Operating voltage: 24 V DC / Current consumption: 30 mA / 1 normally closed contact / 1 normally open contact / Contact current capacity: 1A, 30 V	136571	24 V DC	Flush-mounted installation	2 Stk.
NSA320 UP (138167)		138167	24 V DC	Flush-mounted installation	2 Stk.

**RP 220 RELAY BOARD \***

Relay board for universal use for the generation and switching of potential-free contacts



Designation	Description	Ident-No.	Dimensions	Number of relays
RP 220 relay board	for universal use / 2 potential-free changeover contacts / Switching load: 30 V / 1 A / Operating voltage: 24 V DC / Current consumption: 10 mA / W x H x D: 28 x 25 x 18 mm	102355	28 x 25 x 18 mm	2 Stk.

**NOT 220 AP \***

Emergency exit system emergency push button for mains voltage shut-off in the case of an emergency or during maintenance work, surface-mounted installation



Designation	Description	Ident-No.	Colour	Dimensions	Operating voltage
NOT 220 AP emergency stop switch, IP65 *	in plastic casing IP65 / 94 x 94 x 122 mm / with emergency exit sign arrow downwards / Operating voltage: 24 V DC / Contact rating: 3A, 250 V / 1 normally closed contact	076777	grey	94 x 94 x 122 mm	24 V DC

**KEY SWITCH 220 UP \***

Key switch for authorised activation and changing the mode of operation of automatic doors, flush-mounted



Designation	Description	Ident-No.	Colour	Type of installation
SCT 220 key switch, Jung ST 550 *	Two-sided switching operation, with Euro profile half cylinder and three keys / with 1-gang frame	094169	alpine white	Flush-mounted installation
SCT 220, GIRA E2 key switch	Two-sided switching operation, with Euro profile half cylinder and three keys	094171	pure white matt	Flush-mounted installation
SCT 220, Jung LS 990 key switch *	Two-sided switching operation, with Euro profile half cylinder and three keys / with Euro profile half cylinder 30/10 / with single frame / IP rating: IP20 / W x H x D: 81 x 81 x 62.5	094170	Stainless steel	Flush-mounted installation
SCT 220, GIRA E2 key switch *	Switch programme GIRA E2 / with Euro profile half cylinder 30/10 / with single frame / IP rating: IP20 / W x H x D: 81 x 81 x 62.5	094012	pure white matt	Flush-mounted installation
SCT 220, Jung LS 990 key switch *	Two-sided switching operation, with Euro profile half cylinder and three keys / with Euro profile half cylinder 30/10 / with single frame / IP rating: IP20 / W x H x D: 81 x 81 x 62.5	089345	Stainless steel	Flush-mounted installation

**KEY SWITCH 320 UP \***

Key switch for authorised activation and for changing the mode of operation of automatic doors, flush-mounted



Designation	Description	Ident-No.	Colour	Operating voltage	Type of installation
SCT 320 UP, key switch	Two-sided switching operation, with Euro profile half cylinder and three keys / with sabotage contact / with ribbon cable / Contact rating: 24 V DC, 1A / Area of application: dry rooms / Without frame	132278	anthracite	24 V DC	Flush-mounted installation
SCT 320 UP, key switch	Two-sided switching operation, with Euro profile half cylinder and three keys / with sabotage contact / with ribbon cable / Contact rating: 24 V DC, 1A / Area of application: dry rooms / Without frame	131984	alpine white	24 V DC	Flush-mounted installation
SCT 320 UP, key switch	Two-sided switching operation, with Euro profile half cylinder and three keys / with sabotage contact / with ribbon cable / Contact rating: 24 V DC, 1A / Area of application: dry rooms / Without frame	130370	pure white matt	24 V DC	Flush-mounted installation

**SCT 222 \***

Key switch for authorised activation and changing the mode of operation of automatic doors, surface and flush-mounted



Designation	Description	Ident-No.	Colour	Dimensions	Type of installation
SCT 222 key switch with LEDs *	Two-sided switching operation, with Euro profile half cylinder and three keys / with aluminium front plate / right LED red/green, left LED yellow / Operating voltage 24 V DC / Current consumption: 30 mA / IP rating: IP54 / Dimensions: / W x H front plate: 100 x 110 mm / W x H x D flush-mounted housing: approx. 70 x 80 x 48 mm	100064	silver-coloured	100 x 110 x 48 mm	Flush-mounted installation
SCT 222 key switch with LEDs *	Two-sided switching operation, with Euro profile half cylinder and three keys / with aluminium front plate / right LED red/green, left LED yellow / Operating voltage 24 V DC / Current consumption: 30 mA / IP rating: IP54 / Dimensions: / W x H x D: 70 x 80 x 48	100065	silver-coloured	70 x 80 x 48 mm	Surface-mounted installation

**TERMINAL T 320 AP – EN 13637 \***

Slave control unit for bidirectional escape routes with a TZ 320 with integrated key switch



Designation	Description	Ident-No.	Colour	Dimensions	Operating voltage
Terminal T 320 AP – EN 13637 *	Consisting of: / Control unit with emergency push button, / Key switch with Euro profile half cylinder / Emergency exit sign illuminated / Operating voltage 24 V DC	193547	green	77 x 197 x 88 mm	24 V DC
Terminal T 320 AP – EN 13637 *	Consisting of: / Control unit with emergency push button, / Key switch with Euro profile half cylinder / Emergency exit sign illuminated / Operating voltage 24 V DC	193548	white aluminium	77 x 197 x 88 mm	24 V DC

**ST 220**

Service terminal for the wireless and wired parameter setting of GEZE door and window products



Designation	Description	Ident-No.	Colour	Dimensions	Operating voltage
ST 220 service terminal	For parameter setting and diagnosis for TZ 320, TE 220, automatic door systems, drives from the IQ windowdrive series and THZ N4, THZ Comfort N4, battery operation with 4x AAA cells (not supplied by GEZE), plain text display on illuminated panel, keypad for operation / Parameter changes to GEZE systems may only be carried out by experts who have been authorised by the manufacturer	087261	blue	80 x 125 x 37 mm	24 V

**T 320 UP CONTROL UNIT \***

Slave control unit for bidirectional escape routes with a TZ 320 or TZ 322



Designation	Description	Ident-No.	Operating voltage	Type of installation
T 320 UP control unit *	(no complete flush-mounting set available. Made up of individual components) / Control unit with emergency push button / Impact cover made of transparent plastic / For switch programmes in System 55 / Installation in flush-mounted sockets 62.5 mm deep / Operating voltage: 24 V DC / Current consumption: 100 mA	140999	24 V DC	Flush-mounted installation

**NOT 320 SURFACE MOUNTED \***

Emergency exit system emergency push button for mains voltage shut-off in the case of an emergency or during maintenance work, surface-mounted installation



Designation	Description	Ident-No.	Colour	Operating voltage	Type of installation
NOT 320 AP emergency push button, Jung AS 500 *	with surface mounted cap Jung AS 500 and single frame / Impact cover made of transparent plastic / Impact cover dimensions 55 x 55 mm / Operating voltage: 24 V DC / Current consumption: 30 mA / 1 normally closed contact / 1 normally open contact / Contact current capacity: 1A, 30 V	137967	alpine white	24 V DC	Surface-mounted installation

**SLE 220 \***

Warning light for reinforcing an optical alarm signal



Designation	Description	Ident-No.	Colour	Operating voltage	Housing
SLE 220 indicator lamp surface mounting *	external indicator lamp for visual alarm indication / Operating voltage: 24 V DC / Reflector colour: red / IP rating: IP20 / W x H x D: 61 x 61 x 74 mm	020866	red	24 V DC	Plastic

**SLE 220 \***

Warning light for reinforcing an optical alarm signal



Designation	Description	Ident-No.	Colour	Supply voltage	Operating voltage
SLE 220 indicator lamp flush mounting *	Reflector colour: green / Operating voltage: 24 V DC / Switch programme: Jung AS 500, alpine white	115936	green	24 V DC	24 V DC
SLE 220 indicator lamp flush mounting *	Reflector colour: red / Operating voltage: 24 V DC / Switch programme: Jung AS 500, alpine white	115934	red	24 V DC	24 V DC

\* The products designated above may vary in form, type, characteristics, function, or availability depending on the country. Please get in touch with your GEZE contact person if you have any questions.